



# SUSTAINABILITY WASTE

# 411



## Legend

- Recycle Bins
- Compost Bins

<http://map.geog.ucsb.edu>

### On campus last year...

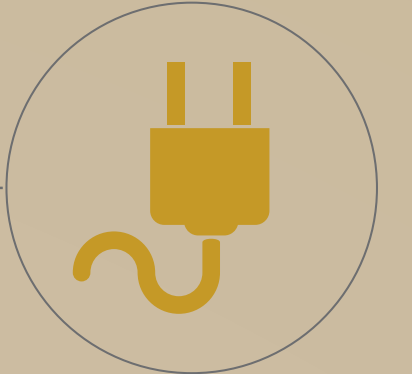


## 28 TONS

of coffee grounds were collected from the UCen eateries and directly applied as a soil amendment on-campus.

## 85 TONS

of electronic waste were collected and recycled by the A.S. Recycling and Central Stores.



## 160 TONS

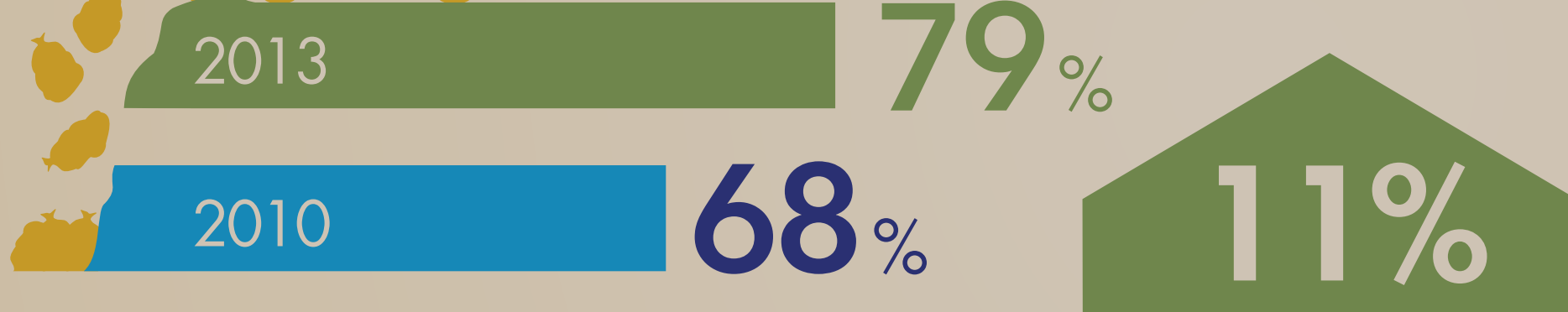
of furniture and office equipment were repurposed and given a new home.



## Waste Diversion

UCSB diverted 70% of its campus waste from the landfill. This includes recyclables, compost, and repurposing.

\*Not including waste from construction and demolition projects



Percentage of campus waste diverted from landfill through recycling or reuse.

Increase of waste diversion in the last three years



In the 2012-2013 fiscal year, UCSB ranked 3rd highest in the UC System for its waste diversion percentage. (LEFT)

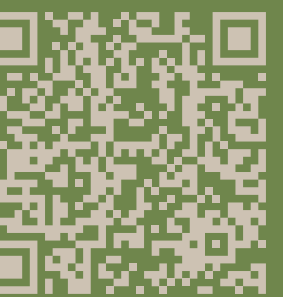


In a nationwide recycling competition, UCSB ranked 14th in diverting food waste organics from the landfill through composting. (RIGHT)

### Action today for tomorrow

#### Start your own worm bin.

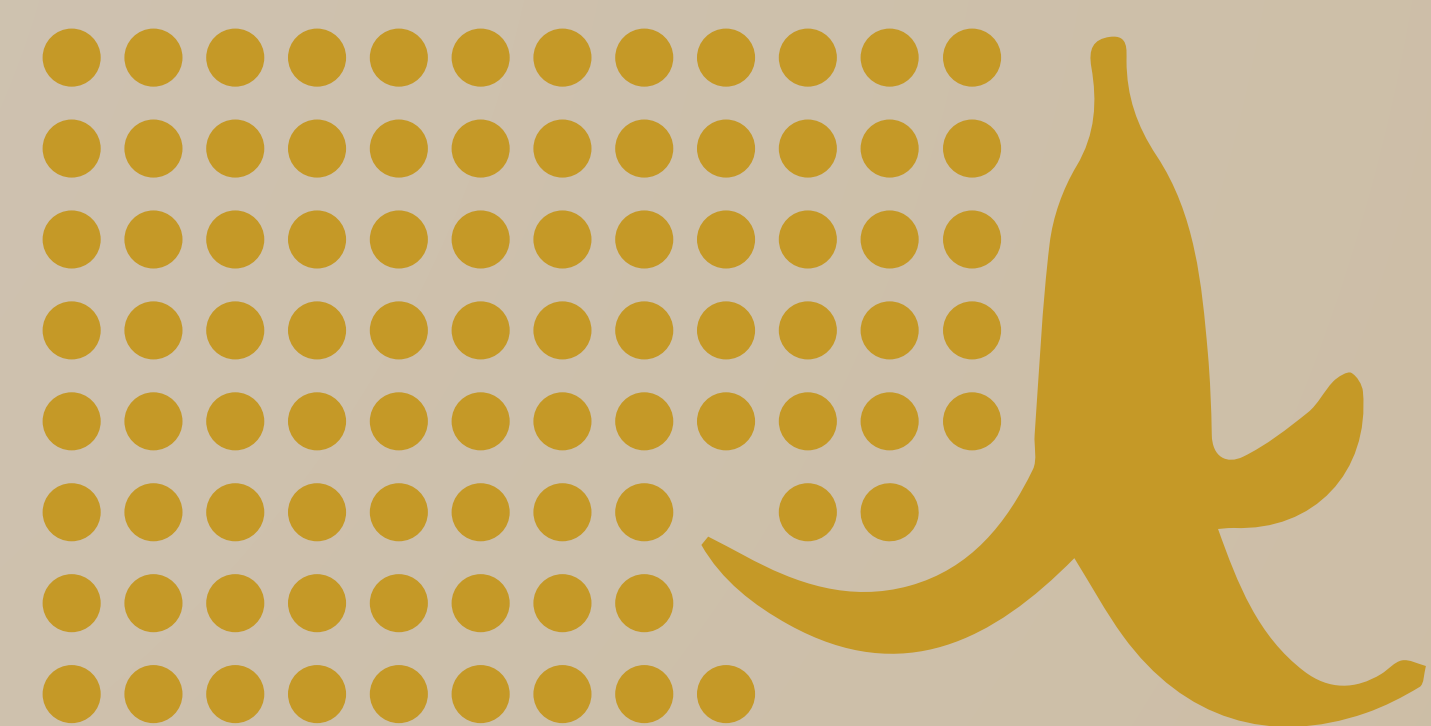
A worm bin can turn food scraps into fertilizer in only weeks. Simple – Small – Odor free



- build or obtain a tote bin and drill holes into the bottom
- add a base layer of soil and newspaper shreds to bin
- obtain worms from local farmer or gardening store
- feed worms by burying food scraps into soil

NOTE: Worms don't like garlic, citrus, or spices.

## 80 TONS of COMPOST EVERY MONTH



A.S. Recycling's worms vermicompost about 4 tons of organics annually. That is equivalent to the weight of about 4 mid-size sedans.



[sustainability.ucsb.edu](http://sustainability.ucsb.edu)



[map.geog.ucsb.edu](http://map.geog.ucsb.edu)



[/ucsbsustainability](https://www.facebook.com/ucsbsustainability)



[/ucsbsustainable](https://twitter.com/ucsbsustainable)