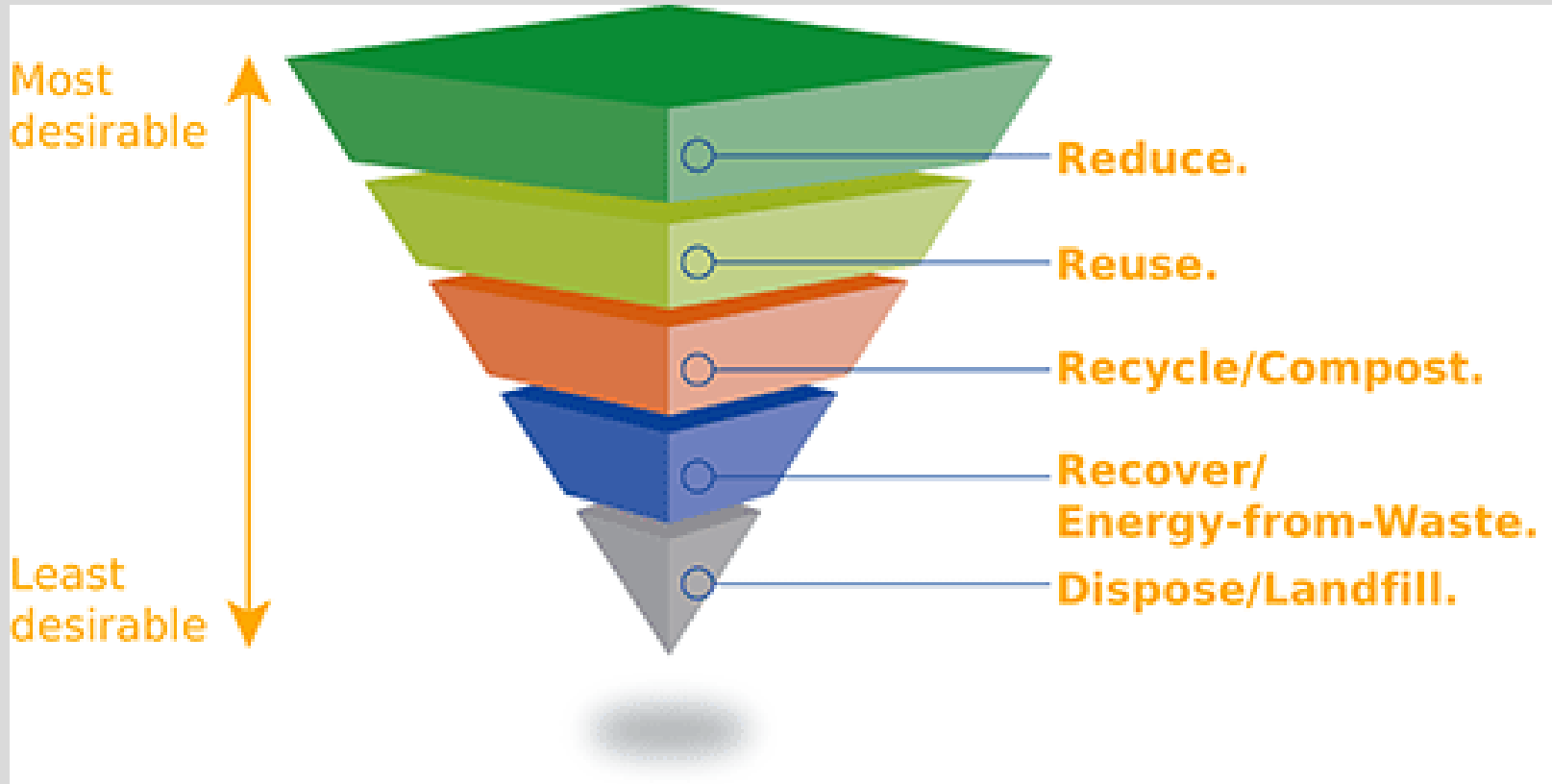


Recycling Programs At the City of Goleta



South Coast Sustainability Summit
October 13, 2011

The Waste Hierarchy



South Coast Recycling Programs

- South Coast is a leader in recycling programs
 - 1970s – 1980s:
 - Curbside collection of source separated recyclables
 - 1990s:
 - HHW collection programs
 - Implementation of commingled recyclables collection
 - Implementation of greenwaste collection
 - Construction and demolition debris recycling
 - 2000s:
 - Mandatory commercial recycling
 - Electronic waste collection programs
 - Medical “sharps” and pharmaceutical collection programs



Commingled Recyclables



Paper & Fiber Items



Glass Items



Metal Items



Plastics



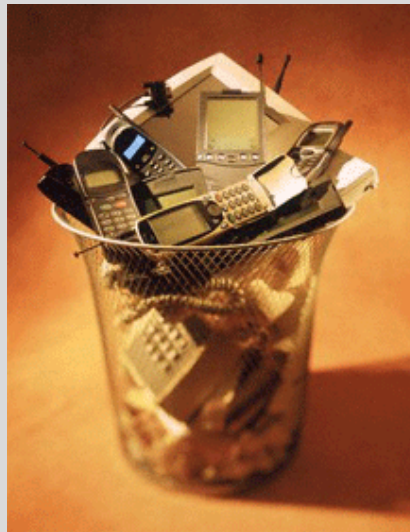
Organic Wastes



Hazardous Wastes



Household Hazardous Waste



Electronic Waste



Medical & Pharmaceutical waste



Household Batteries



Other Waste Streams



“White Goods”

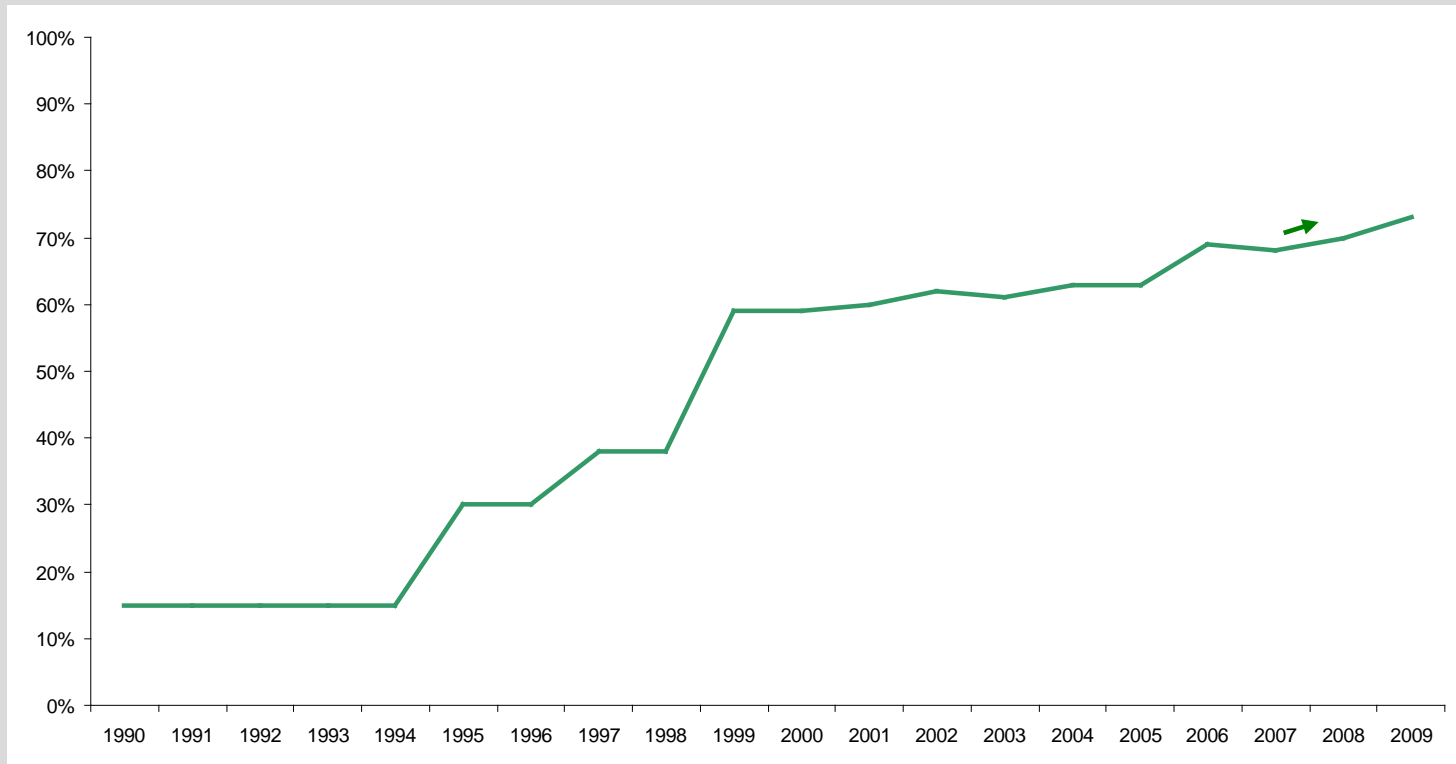


Construction & Demolition Waste



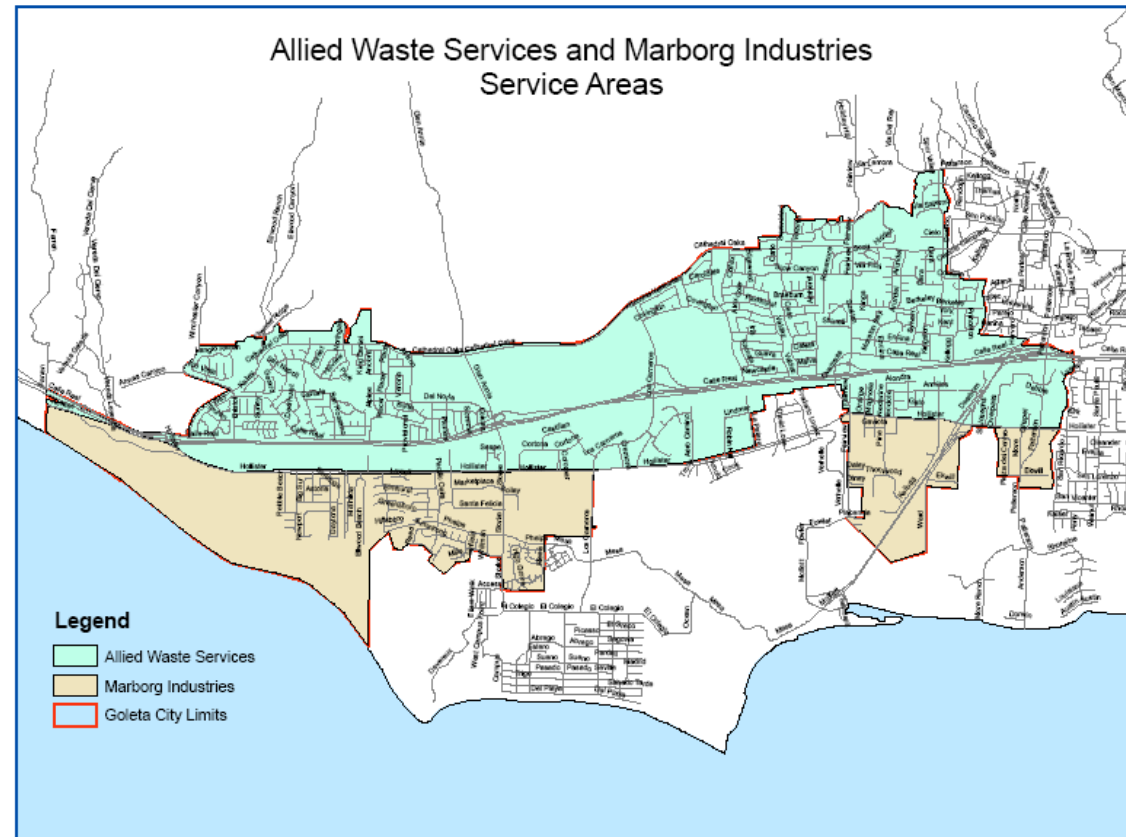
Successful Diversion Programs

- Jurisdictions served by Tajiguas divert more than 70% of their waste from the landfill



A Change Is Going to Come

- City Incorporated in 2002
- Inherited existing solid waste system
- Two haulers provided collection services
 - Allied Waste
contract expired 6/30/11
 - MarBorg Industries
contract expires 6/30/19



Solid Waste Franchise Agreement Summary

- Automated Collection
- Standardized Service Levels
- Reduced Residential & Commercial Rates
- Enhanced Collection & Recycling Services
- Free Public Collection Services
- Increased Diversion



Automated Collection

- **Benefits:**

- Increased efficiency

- Reduced carbon emissions

- Fewer injuries to workers

- Lower customer rates

- **Requires customers to place carts at curbside on collection day**

- Disability/Senior exemption (free backyard service)

- Backyard Service charge for others



Standardized Residential Service Levels

- Three levels of service based on refuse cart capacity (32, 64, & 96 gallons)
- **Unlimited** Bi-Weekly Collection of Recyclables
- **Unlimited** Weekly Collection of Green Waste
- Residents may request additional recyclables and greenwaste capacity at **no additional cost**



Reduced Residential & Commercial Rates

- Single Family Residential Rates **20% lower** on average
- Multi Family Residential Rates **22% lower** on average
- Commercial Rates **5% lower** on average
- Total Annual Savings of over **\$700,000** per year



Enhanced Residential Services

- **Unlimited** Household Battery Collection Program
- **Unlimited** Home Sharps Collection Program
- Residential Bulky Item Collection 2x/year
- **Unlimited** collection of e-waste & “white goods”
- Applies to **all** single family and multi family residential customers



Free Public Collection Services

- Solid Waste & Recycling Collection at **all** City Facilities
- Solid Waste & Recycling Collection at **all** City Parks & Open Spaces
- Solid Waste and Recycling Collection at **all** MTD Bus Stop & Street Receptacle Locations
- Solid Waste & Recycling collection at **all** public school campuses
- Collection of Abandoned Waste in City Right of Way
- Total Value of over **\$500,000** in Free Services per Year



Increased Diversion

- Conservation of landfill space is important for the South Coast
- Agreement Requires an Increase in Diversion of 23% over base year by Year 7
- Most diversion will come from the commercial sector
- Agreement contains diversion milestones and penalties for non-attainment





Thank you!

Questions?